

THE BEACH VILLA

3 Bedroom, 2 Bath



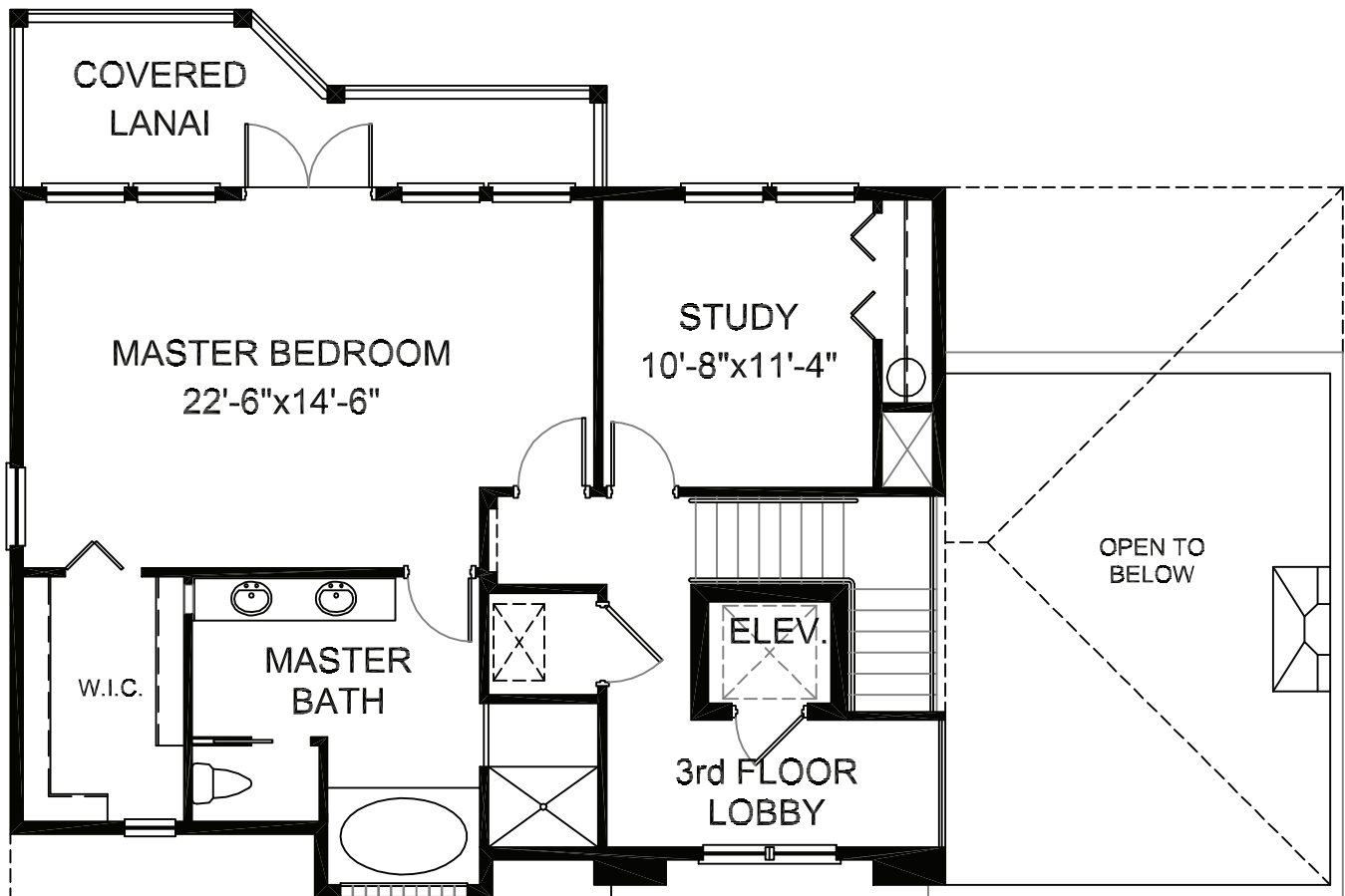
SQUARE FOOTAGE

1st. FLOOR LIVING AREA	1,459 sq. ft.
2nd. FLOOR LIVING AREA	941 sq. ft.
TOTAL LIVING AREA	2,400 sq. ft.

VERANDAH	229 sq. ft.
ENCLOSED GROUND FLOOR	1,380 sq. ft.
TOTAL	4,009 sq. ft.

THE BEACH VILLA

3 Bedroom, 2 Bath



Because of ongoing research to develop better building methods and materials, we reserve the right to change elevations, specifications, dimensions, design, materials and price without prior notice.

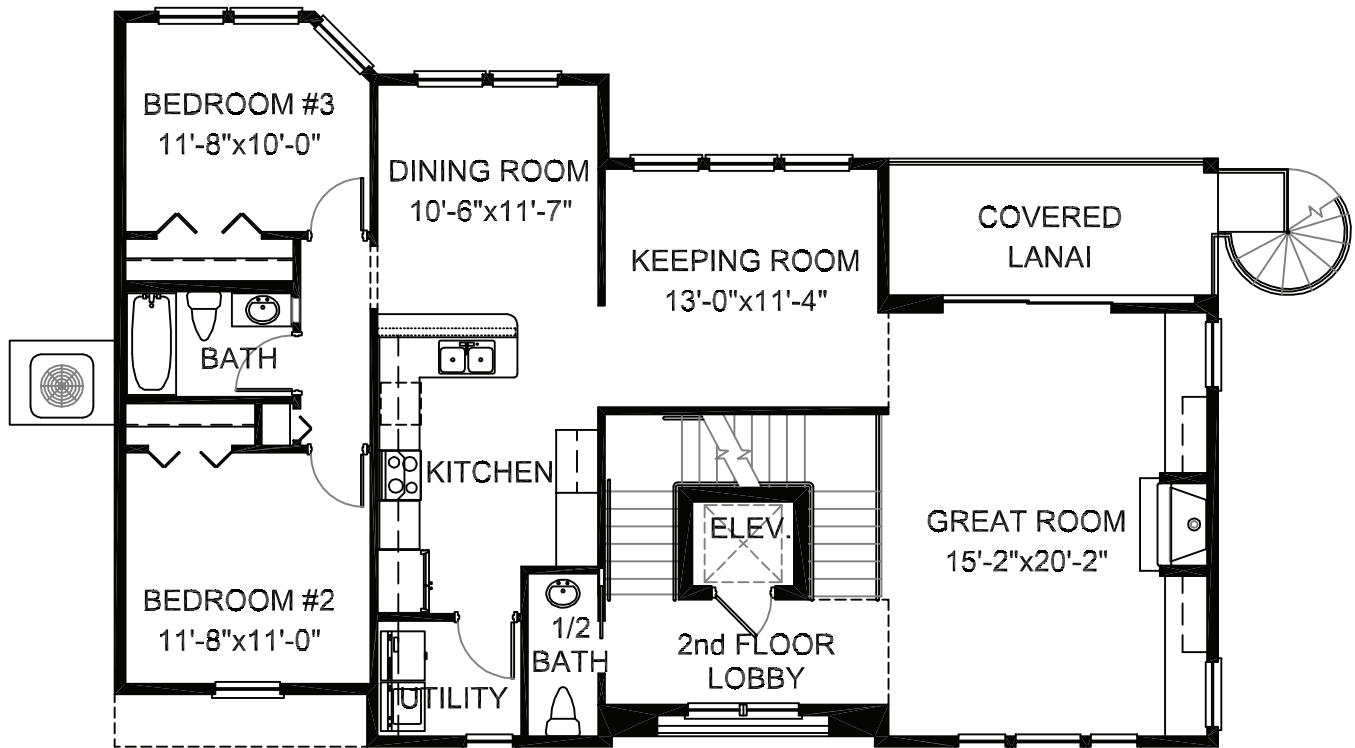


SQUARE FOOTAGE

1st. FLOOR LIVING AREA	1,459 sq. ft.
2nd. FLOOR LIVING AREA	941 sq. ft.
TOTAL LIVING AREA	2,400 sq. ft.
VERANDAH	229 sq. ft.
ENCLOSED GROUND FLOOR	1,380 sq. ft.
TOTAL	4,009 sq. ft.

THE BEACH VILLA

3 Bedroom, 2 Bath



Because of ongoing research to develop better building methods and materials, we reserve the right to change elevations, specifications, dimensions, design, materials and price without prior notice.

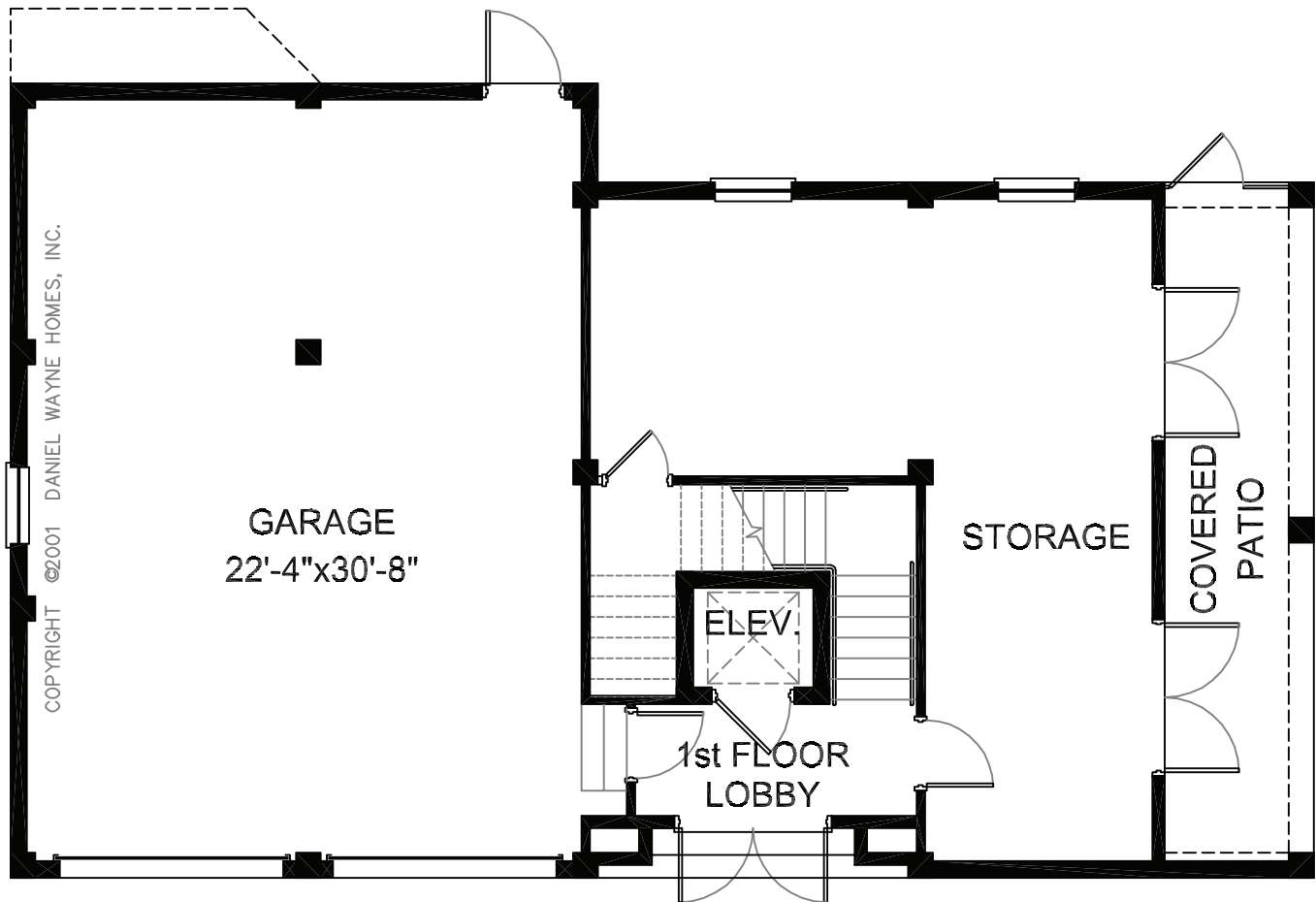


SQUARE FOOTAGE

1st. FLOOR LIVING AREA	1,459 sq. ft.
2nd. FLOOR LIVING AREA	941 sq. ft.
TOTAL LIVING AREA	2,400 sq. ft.
VERANDAH	229 sq. ft.
ENCLOSED GROUND FLOOR	1,380 sq. ft.
TOTAL	4,009 sq. ft.

THE BEACH VILLA

3 Bedroom, 2 Bath



COPYRIGHT ©2001 DANIEL WAYNE HOMES, INC.

GARAGE
22'-4"x30'-8"

STORAGE

COVERED
PATIO

1st FLOOR
LOBBY

ELEV.

Because of ongoing research to develop better building methods and materials, we reserve the right to change elevations, specifications, dimensions, design, materials and price without prior notice.



SQUARE FOOTAGE

1st. FLOOR LIVING AREA	1,459 sq. ft.
2nd. FLOOR LIVING AREA	941 sq. ft.
TOTAL LIVING AREA	2,400 sq. ft.
VERANDAH	229 sq. ft.
ENCLOSED GROUND FLOOR	1,380 sq. ft.
TOTAL	4,009 sq. ft.